



IR ENERGY INC.  
 563 BARTON STREET  
 STONEY CREEK, ON L8E 5S1  
 PHONE: (905) 664-9082  
 www.irenergy.ca

SELECT DESIRED GAS:

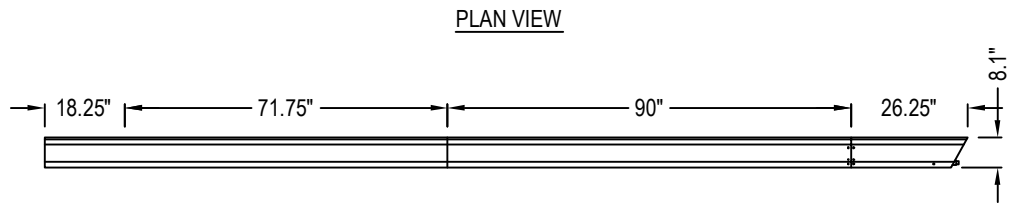
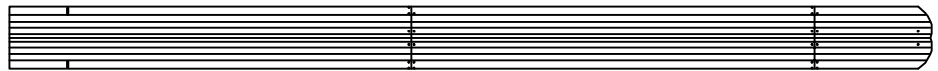
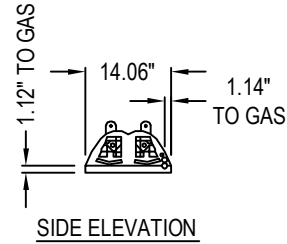
NATURAL GAS

SELECT DESIRED FINISH:

ALUMINUM REFLECTORS, BURNER END CAP, SERVICE COVER AND EXHAUST END CAP

ALUMINUM REFLECTORS AND EXHAUST END CAP, 304 STAINLESS BURNER END CAP AND SERVICE COVER WITH E-COATED INTERNAL BURNER HEAD

316 MARINE GRADE STAINLESS REFLECTORS, BURNER AND EXHAUST END CAP, SERVICE COVER AND INTERNAL BURNER HEAD

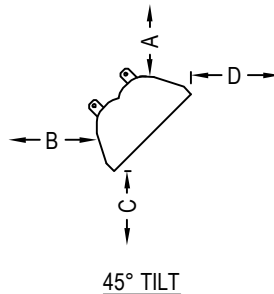
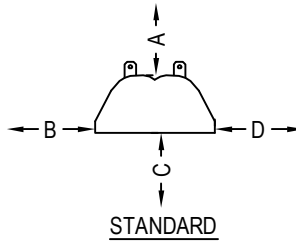


**TECHNICAL SPECIFICATIONS:**

- 316 MARINE GRADE STAINLESS HANGARS
- ALUMINUM DECORATIVE GRILLE
- MANIFOLD PRESSURE: NG - 3.3" W.C. (HI), 2" W.C. (LO)
- GAS SUPPLY PRESSURE: NG - 5" W.C. (MIN), 14" W.C. (MAX)
- INLET CONNECTION: 1/2" MALE NPT.
- ELECTRIC SUPPLY: 120 VAC, 60 HZ, 1 AMP; 36" CORD WITH GROUNDED 3 PRONG PLUG.
- CONTROL: TWO-STAGE SWITCH - PART #EE020 (OPTIONAL).

**WARRANTY:**

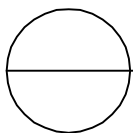
- BURNER AND CONTROLS: 1 YEAR
- HEAT TREATED ALUMINIZED TUBE: 10 YEARS



CLEARANCE TO COMBUSTIBLES		
REFLECTOR CONFIGURATION	DIMENSION	MODEL NO.
		ETS100 - 15'
STANDARD	A	100,000 - 75,000 BTU/HR
	B	4"
	C	29"
	D	73.5"
45° TILT	A	29"
	B	8"
	C	2.5"
	D	55.5"
ENDS (BOTH SIDES)		43"
		4"

**NOTES:**

1. INSTALLATION TO BE COMPLETED IN ACCORDANCE WITH MANUFACTURER'S SPECIFICATIONS.
2. DO NOT SCALE DRAWING.
3. THIS DRAWING IS INTENDED FOR USE BY ARCHITECTS, ENGINEERS, CONTRACTORS, CONSULTANTS AND DESIGN PROFESSIONALS FOR PLANNING PURPOSES ONLY. THIS DRAWING MAY NOT BE USED FOR CONSTRUCTION.
4. ALL INFORMATION CONTAINED HEREIN WAS CURRENT AT THE TIME OF DEVELOPMENT BUT MUST BE REVIEWED AND APPROVED BY THE PRODUCT MANUFACTURER TO BE CONSIDERED ACCURATE.
5. CONTRACTOR'S NOTE: FOR PRODUCT AND COMPANY INFORMATION VISIT [www.CADdetails.com/info](http://www.CADdetails.com/info) AND ENTER REFERENCE NUMBER 5029-018.



**EVENTUBE**

EVENTUBE HIGH OUTPUT SLIM LINE: MODEL ETS100 - 75,000BTU/HR (LO), 100,000BTU/HR (HI), 15FT. NATURAL GAS



IR ENERGY INC.  
 563 BARTON STREET  
 STONEY CREEK, ON L8E 5S1  
 PHONE: (905) 664-9082  
 www.irenergy.ca

SELECT DESIRED GAS:

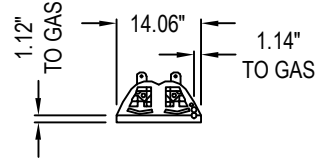
NATURAL GAS

SELECT DESIRED FINISH:

ALUMINUM REFLECTORS, BURNER END CAP, SERVICE COVER AND EXHAUST END CAP

ALUMINUM REFLECTORS AND EXHAUST END CAP, 304 STAINLESS BURNER END CAP AND SERVICE COVER WITH E-COATED INTERNAL BURNER HEAD

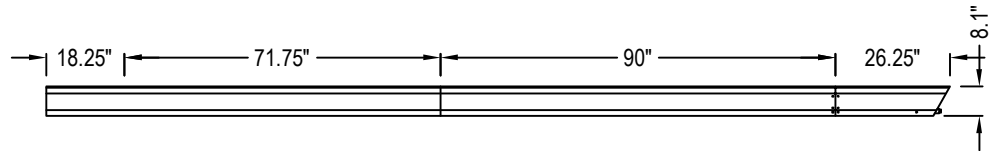
316 MARINE GRADE STAINLESS REFLECTORS, BURNER AND EXHAUST END CAP, SERVICE COVER AND INTERNAL BURNER HEAD



SIDE ELEVATION



PLAN VIEW



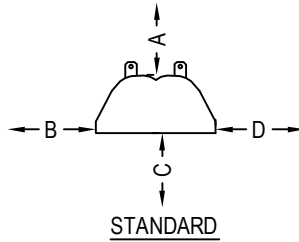
FRONT ELEVATION

**TECHNICAL SPECIFICATIONS:**

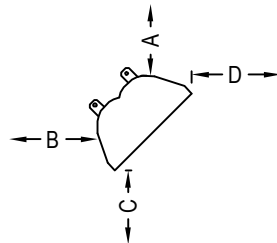
- 316 MARINE GRADE STAINLESS HANGARS
- ALUMINUM DECORATIVE GRILLE
- MANIFOLD PRESSURE: NG - 3.3" W.C. (HI), 2" W.C. (LO)
- GAS SUPPLY PRESSURE: NG - 5" W.C. (MIN), 14" W.C. (MAX)
- INLET CONNECTION: 1/2" FEMALE NPT.
- ELECTRIC SUPPLY: 120 VAC, 60 HZ, 1 AMP; 36" CORD WITH GROUNDED 3 PRONG PLUG.
- CONTROL: TWO-STAGE SWITCH - PART #EE020 (OPTIONAL).

**WARRANTY:**

- BURNER AND CONTROLS: 1 YEAR
- HEAT TREATED ALUMINIZED TUBE: 10 YEARS



STANDARD



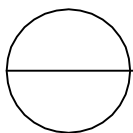
45° TILT

**CLEARANCE TO COMBUSTIBLES**

REFLECTOR CONFIGURATION	DIMENSION	MODEL NO.
		ETS80 - 15'
STANDARD	A	4"
	B	29"
	C	73.5"
	D	29"
45° TILT	A	8"
	B	2.5"
	C	55.5"
	D	43"
ENDS (BOTH SIDES)		4"

**NOTES:**

1. INSTALLATION TO BE COMPLETED IN ACCORDANCE WITH MANUFACTURER'S SPECIFICATIONS.
2. DO NOT SCALE DRAWING.
3. THIS DRAWING IS INTENDED FOR USE BY ARCHITECTS, ENGINEERS, CONTRACTORS, CONSULTANTS AND DESIGN PROFESSIONALS FOR PLANNING PURPOSES ONLY. THIS DRAWING MAY NOT BE USED FOR CONSTRUCTION.
4. ALL INFORMATION CONTAINED HEREIN WAS CURRENT AT THE TIME OF DEVELOPMENT BUT MUST BE REVIEWED AND APPROVED BY THE PRODUCT MANUFACTURER TO BE CONSIDERED ACCURATE.
5. CONTRACTOR'S NOTE: FOR PRODUCT AND COMPANY INFORMATION VISIT [www.CADdetails.com/info](http://www.CADdetails.com/info) AND ENTER REFERENCE NUMBER 5029-017.



**EVENTUBE**

EVENTUBE HIGH OUTPUT SLIM LINE: MODEL ETS80 - 60,000BTU/HR (LO), 80,000BTU/HR (HI), 15FT. NATURAL GAS



IR ENERGY INC.  
 563 BARTON STREET  
 STONEY CREEK, ON L8E 5S1  
 PHONE: (905) 664-9082  
 www.irenergy.ca

SELECT DESIRED GAS:

NATURAL GAS

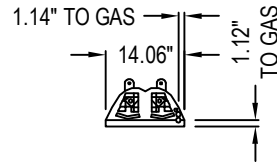
PROPANE

SELECT DESIRED FINISH:

ALUMINUM REFLECTORS, BURNER END CAP, SERVICE COVER AND EXHAUST END CAP

ALUMINUM REFLECTORS AND EXHAUST END CAP, 304 STAINLESS BURNER END CAP AND SERVICE COVER WITH E-COATED INTERNAL BURNER HEAD

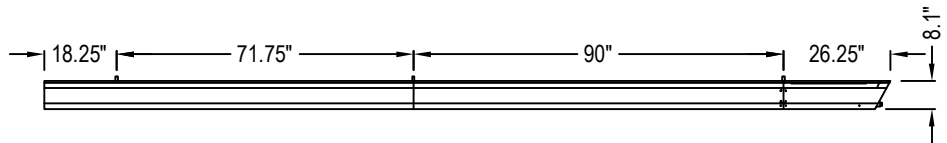
316 MARINE GRADE STAINLESS REFLECTORS, BURNER AND EXHAUST END CAP, SERVICE COVER AND INTERNAL BURNER HEAD



SIDE ELEVATION



PLAN VIEW



FRONT ELEVATION

**TECHNICAL SPECIFICATIONS:**

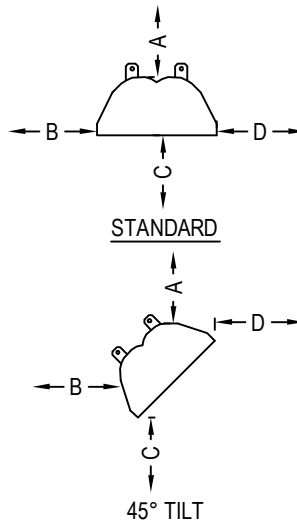
- 316 MARINE GRADE STAINLESS HANGARS
- ALUMINUM DECORATIVE GRILLE
- MANIFOLD PRESSURE: NG - 3.3" W.C. (HI), 2" W.C. (LO) | LPG - 10.2" W.C. (HI), 6.4" W.C. (LO)
- GAS SUPPLY PRESSURE: NG - 5" W.C. (MIN), 14" W.C. (MAX) | LPG - 11.5" W.C. (MIN), 14" W.C. (MAX)
- INLET CONNECTION: 1/2" FEMALE NPT.
- ELECTRIC SUPPLY: 120 VAC, 60 HZ, 1 AMP; 36" CORD WITH GROUNDED 3 PRONG PLUG.
- CONTROL: TWO-STAGE SWITCH - PART #EE020 (OPTIONAL).

**WARRANTY:**

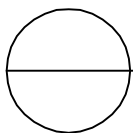
- BURNER AND CONTROLS: 1 YEAR
- HEAT TREATED ALUMINIZED TUBE: 10 YEARS

**NOTES:**

1. INSTALLATION TO BE COMPLETED IN ACCORDANCE WITH MANUFACTURER'S SPECIFICATIONS.
2. DO NOT SCALE DRAWING.
3. THIS DRAWING IS INTENDED FOR USE BY ARCHITECTS, ENGINEERS, CONTRACTORS, CONSULTANTS AND DESIGN PROFESSIONALS FOR PLANNING PURPOSES ONLY. THIS DRAWING MAY NOT BE USED FOR CONSTRUCTION.
4. ALL INFORMATION CONTAINED HEREIN WAS CURRENT AT THE TIME OF DEVELOPMENT BUT MUST BE REVIEWED AND APPROVED BY THE PRODUCT MANUFACTURER TO BE CONSIDERED ACCURATE.
5. CONTRACTOR'S NOTE: FOR PRODUCT AND COMPANY INFORMATION VISIT [www.CADdetails.com/info](http://www.CADdetails.com/info) AND ENTER REFERENCE NUMBER 5029-016.



CLEARANCE TO COMBUSTIBLES		
REFLECTOR CONFIGURATION	DIMENSION	ETS60 - 15'
STANDARD	A	4"
	B	29"
	C	73.5"
	D	29"
45° TILT	A	8"
	B	2.5"
	C	55.5"
	D	43"
ENDS (BOTH SIDES)		4"



**EVENTUBE**

EVENTUBE HIGH OUTPUT SLIM LINE: MODEL ETS60 - 45,000BTU/HR (LO), 60,000BTU/HR (HI), 15FT. NATURAL GAS



IR ENERGY INC.  
 563 BARTON STREET  
 STONEY CREEK, ON L8E 5S1  
 PHONE: (905) 664-9082  
 www.irenergy.ca

SELECT DESIRED GAS:

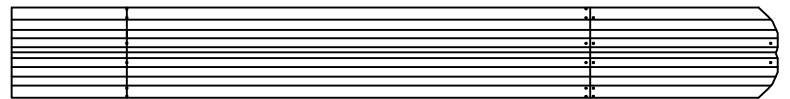
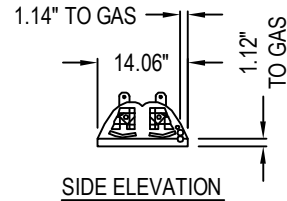
NATURAL GAS

SELECT DESIRED FINISH:

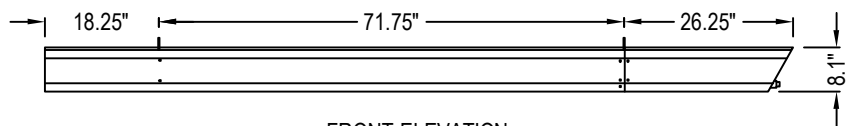
ALUMINUM REFLECTORS, BURNER END CAP, SERVICE COVER AND EXHAUST END CAP

ALUMINUM REFLECTORS AND EXHAUST END CAP, 304 STAINLESS BURNER END CAP AND SERVICE COVER WITH E-COATED INTERNAL BURNER HEAD

316 MARINE GRADE STAINLESS REFLECTORS, BURNER AND EXHAUST END CAP, SERVICE COVER AND INTERNAL BURNER HEAD



PLAN VIEW



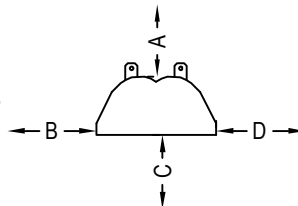
FRONT ELEVATION

**TECHNICAL SPECIFICATIONS:**

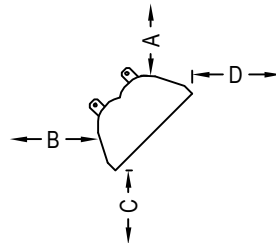
- 316 MARINE GRADE STAINLESS HANGARS
- ALUMINUM DECORATIVE GRILLE
- NATURAL GAS MANIFOLD PRESSURE: 3.3" W.C. (HI), 2" W.C. (LO).
- NATURAL GAS SUPPLY PRESSURE: 5" W.C. (MIN), 14" W.C. (MAX).
- INLET CONNECTION: 1/2" MALE NPT.
- ELECTRIC SUPPLY: 120 VAC, 60 HZ, 1 AMP; 36" CORD WITH GROUNDED 3 PRONG PLUG.
- CONTROL: TWO-STAGE SWITCH - PART #EE020 (OPTIONAL).

**WARRANTY:**

- BURNER AND CONTROLS: 1 YEAR
- HEAT TREATED ALUMINIZED TUBE: 10 YEARS.



STANDARD



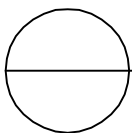
45° TILT

**CLEARANCE TO COMBUSTIBLES**

REFLECTOR CONFIGURATION	DIMENSION	MODEL NO.
		ETS50 - 9'
STANDARD	A	50,000 - 35,000 BTU/HR 5.5"
	B	25"
	C	66"
	D	25"
45° TILT	A	8"
	B	3"
	C	50"
	D	40"
BURNER END		4"
EXHAUST END		6"

**NOTES:**

1. INSTALLATION TO BE COMPLETED IN ACCORDANCE WITH MANUFACTURER'S SPECIFICATIONS.
2. DO NOT SCALE DRAWING.
3. THIS DRAWING IS INTENDED FOR USE BY ARCHITECTS, ENGINEERS, CONTRACTORS, CONSULTANTS AND DESIGN PROFESSIONALS FOR PLANNING PURPOSES ONLY. THIS DRAWING MAY NOT BE USED FOR CONSTRUCTION.
4. ALL INFORMATION CONTAINED HEREIN WAS CURRENT AT THE TIME OF DEVELOPMENT BUT MUST BE REVIEWED AND APPROVED BY THE PRODUCT MANUFACTURER TO BE CONSIDERED ACCURATE.
5. CONTRACTOR'S NOTE: FOR PRODUCT AND COMPANY INFORMATION VISIT [www.CADdetails.com/info](http://www.CADdetails.com/info) AND ENTER REFERENCE NUMBER 5029-015.



**EVENTUBE**

EVENTUBE HIGH OUTPUT SLIM LINE: MODEL ETS50 - 35,000BTU/HR (LO), 50,000BTU/HR (HI), 9FT. NATURAL GAS