



IR ENERGY INC.  
 563 BARTON STREET  
 STONEY CREEK, ON L8E 5S1  
 PHONE: (905) 664-9082  
 www.irenergy.ca

SELECT DESIRED GAS:

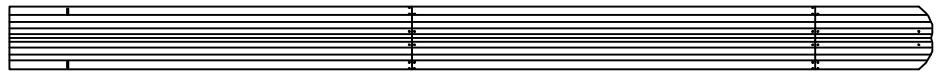
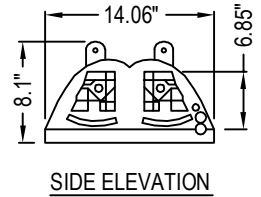
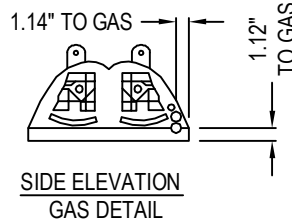
NATURAL GAS

SELECT DESIRED FINISH:

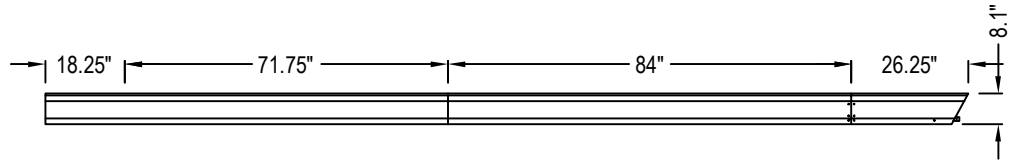
ALUMINUM REFLECTORS, BURNER END CAP, SERVICE COVER AND EXHAUST END CAP

ALUMINUM REFLECTORS AND EXHAUST END CAP, 304 STAINLESS BURNER END CAP AND SERVICE COVER WITH E-COATED INTERNAL BURNER HEAD

316 MARINE GRADE STAINLESS REFLECTORS, BURNER AND EXHAUST END CAP, SERVICE COVER AND INTERNAL BURNER HEAD



PLAN VIEW



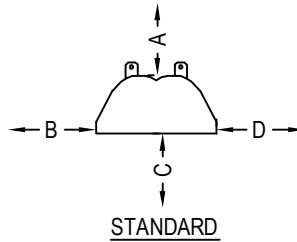
FRONT ELEVATION

**TECHNICAL SPECIFICATIONS:**

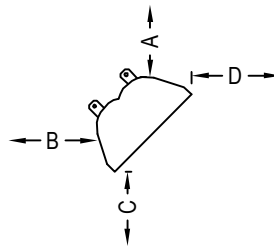
- 316 MARINE GRADE STAINLESS HANGARS
- ALUMINUM DECORATIVE GRILLE
- MANIFOLD PRESSURE: NG - 3.3" W.C. (HI), 2" W.C. (LO)
- GAS SUPPLY PRESSURE: NG - 5" W.C. (MIN), 14" W.C. (MAX)
- INLET CONNECTION: 1/2" MALE NPT.
- ELECTRIC SUPPLY: 120 VAC, 60 HZ, 1 AMP; 36" CORD WITH GROUNDED 3 PRONG PLUG.
- CONTROL: TWO-STAGE SWITCH - PART #EE020 (OPTIONAL).

**WARRANTY:**

- BURNER AND CONTROLS: 1 YEAR
- HEAT TREATED ALUMINIZED TUBE: 10 YEARS



STANDARD



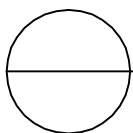
45° TILT

**CLEARANCE TO COMBUSTIBLES**

REFLECTOR CONFIGURATION	DIMENSION	MODEL NO.
		ETS100 - 15'
STANDARD	A	100,000 - 75,000 BTU/HR
	B	4"
	C	73.5"
	D	29"
45° TILT	A	8"
	B	2.5"
	C	55.5"
	D	43"
ENDS (BOTH SIDES)		4"

**NOTES:**

1. INSTALLATION TO BE COMPLETED IN ACCORDANCE WITH MANUFACTURER'S SPECIFICATIONS.
2. DO NOT SCALE DRAWING.
3. THIS DRAWING IS INTENDED FOR USE BY ARCHITECTS, ENGINEERS, CONTRACTORS, CONSULTANTS AND DESIGN PROFESSIONALS FOR PLANNING PURPOSES ONLY.
4. ALL INFORMATION CONTAINED HEREIN WAS CURRENT AT THE TIME OF DEVELOPMENT BUT MUST BE REVIEWED AND APPROVED BY THE PRODUCT MANUFACTURER TO BE CONSIDERED ACCURATE.
5. CONTRACTOR'S NOTE: FOR PRODUCT AND COMPANY INFORMATION VISIT [www.CADdetails.com/info](http://www.CADdetails.com/info) AND ENTER REFERENCE NUMBER 5029-018.



**EVENTUBE**

EVENTUBE HIGH OUTPUT SLIM LINE: MODEL ETS100 - 75,000BTU/HR (LO), 100,000BTU/HR (HI), 15FT. NATURAL GAS